



• NO COMPROMISE •

TRUCK & BUS  
PRODUCT RANGE | 2015

D R I V E N B Y P R E C I S I O N



# The evolution of advanced fleet performance

**It's time to rejuvenate the African truck and bus tyre market with a brand new range of Dunlop products.**

The new generation Dunlop Truck and Bus Radial range has been researched, designed and precision engineered in Japan, manufactured in Sumitomo Rubber Industries' state-of-the-art plants and exhaustively tested to extremes in all road conditions.

The extensive range of advanced patterns has delivered proven results in fleets around the world and offers unparalleled performance in all wheel positions.

The new generation TBR range epitomises **NO COMPROMISE**.  
**NO COMPROMISE** on quality. **NO COMPROMISE** on performance. **NO COMPROMISE** on service.



## Bringing over 100 years of manufacturing expertise to all wheel positions

**The Sumitomo Group comprises 70 companies in the tyre, sporting goods and industrial product fields.**

The tyre business currently accounts for 87% of the group's sales and is the most important business segment for future growth in the group.

Headquartered in Kobe, Japan, Sumitomo Rubber Industries, Ltd (SRI) is the 5th largest tyre manufacturing company in the world and is responsible for producing and

distributing, among other high quality products, the iconic **DUNLOP** brand.

SRI operates 11 tyre factories internationally with sales offices in 16 countries to support our customers' businesses globally and continue our growth trajectory.



Head Office, Kobe, Japan.

**Sumitomo Rubber South Africa (Pty) Ltd. (SRSA) is a division of SRI and has its Head Office in Durban and a factory in Ladysmith.**

SRSA is proud to be associated with SRI and its outstanding reputation and heavy-duty experience in the tyre industry. Now, the arrival of the new generation Dunlop Truck and Bus Range on the continent promises to build on SRI's superb reputation for delivering outstanding quality and service, bringing leading Japanese-engineered technological advancements to short-haul, regional and long-haul fleets throughout Africa.



SRSA Plant Ladysmith, South Africa

## Now, advanced commercial tyre solutions have a global footprint



SRI's Tyre Technical Centre, Japan.

**The new Dunlop TBR range has been precision designed to the highest international quality standards at our Japanese Tyre Technical Centre, one of the most advanced of its kind in the world.**

Testing at SRI's Okayama Test Facility confirms the premium performance of the range in all road conditions.

The new Dunlop range is manufactured at SRI's Shirakawa and Miyazaki plants in Japan and our state-of-the-art Chinese TBR plant in Changshu, and will be distributed via SRSA's constantly expanding distribution network throughout Africa.



SRI's Okayama Test Facility, Japan.



SRI's Shirakawa TBR plant, Japan.

### The internationally sourced advantage

The new range provides fleet owners and logistics managers with significant advantages:

- **Best product for appropriate conditions and applications** – a wider range is now available within each segment to better suit all operational conditions.
- **A stable supply of premium quality products with a proven pedigree** – SRI's footprint and continuous expansion allows for flexible demand planning on a global scale, with accelerated response to demand shifts as required.

- **Ongoing technical and compounding innovation** – local fleets can now benefit from SRI's status as a leader in tyre engineering with a wide range that has been proven to reduce rolling resistance and optimise mileage and retreadability, to provide a better CPK and value offer to any business.
- **Manufactured to global quality standards** – the new generation Dunlop TBR range meets and exceeds the most demanding international quality standards, making it a peace-of-mind fitment choice for any fleet requirements.





## Product Conversion

	CURRENT RANGE	NEW RANGE	NUMBER OF SKUs
STEER	TS354 / TS355	SP391	<b>DECTES</b> DUNLOP Energy Control Technologies 4
	TS366 / TS 367	SP161	<b>DECTES</b> DUNLOP Energy Control Technologies 2
	TS344	SP171	<b>DECTES</b> DUNLOP Energy Control Technologies 1
	SP160	SP160	11
	SP163	SP163	1
	SP120	SP120	1
DRIVE	SP341	SP341	1
	TS465+	SP882	<b>DECTES</b> DUNLOP Energy Control Technologies 3
	TS431	SP431A	3
	SP430	SP430	1
TRAILER / ALL POSITION	SP225	SP225	1
	TS822 / 811+	SP571	<b>DECTES</b> DUNLOP Energy Control Technologies 2
	STE	STE	1
	SP502	SP502	1
	SP811	SP811	1
SUPER SINGLE	TS366	SP261	1
	TS833	SP231A	2
MIXED SERVICE	SP931	SP931	1
		18 PRODUCTS	38

## Product Application and Position

This chart indicates generally the most suitable tyre patterns for each application.

TYPE OF OPERATION	STEER AXLE	DRIVE AXLE	TRAILER AXLE
<b>Long Haul</b> 	SP391 <b>DECTES</b> DUNLOP Energy Control Technologies	SP882 <b>DECTES</b> DUNLOP Energy Control Technologies	SP120 SP391 <b>DECTES</b> DUNLOP Energy Control Technologies SP502 SP571 <b>DECTES</b> DUNLOP Energy Control Technologies SP163
<b>Regional Haul</b> 	SP391 <b>DECTES</b> DUNLOP Energy Control Technologies SP571 <b>DECTES</b> DUNLOP Energy Control Technologies SP160 SP120 SP502 SP171 <b>DECTES</b> DUNLOP Energy Control Technologies SP430	SP341 SP431A SP571 <b>DECTES</b> DUNLOP Energy Control Technologies SP171 <b>DECTES</b> DUNLOP Energy Control Technologies	SP160 SP120 SP571 <b>DECTES</b> DUNLOP Energy Control Technologies SP430 SP502
<b>Urban, Pick-up and Delivery</b> 	SP120 SP171 <b>DECTES</b> DUNLOP Energy Control Technologies SP341 SP391 <b>DECTES</b> DUNLOP Energy Control Technologies (only in 215/75R17.5) SP430 SP502	SP341 SP171 <b>DECTES</b> DUNLOP Energy Control Technologies SP391 <b>DECTES</b> DUNLOP Energy Control Technologies (only in 215/75R17.5) SP431A SP502 SP430	
<b>Mixed Service: On and Off Road</b> 	STE SP225 SP231A SP502 SP571 <b>DECTES</b> DUNLOP Energy Control Technologies SP811 SP931	STE SP931 SP225	STE SP231A SP502 SP811
<b>Coach and Bus</b> 	SP161 <b>DECTES</b> DUNLOP Energy Control Technologies (Coach) SP571 <b>DECTES</b> DUNLOP Energy Control Technologies (Rural Bus) SP160 (only in 275/70R22.5)	SP161 <b>DECTES</b> DUNLOP Energy Control Technologies (Coach) SP571 <b>DECTES</b> DUNLOP Energy Control Technologies (Rural Bus) SP160 (only in 275/70R22.5)	



### SP 391

Steer and Trailer

SIZE	LOAD	SPEED
215/75R17.5	126/124	M
12R22.5	152/149	L
295/80R22.5	152/149	M
315/80R22.5	154/150	M
	156/150	L



### SP 161

Coach/Bus Operations

SIZE	LOAD	SPEED
295/80R22.5	152/149	M
315/80R22.5	154/150	M
	156/150	L



### SP 882

Drive Position, Long Haul Highway

SIZE	LOAD	SPEED
12R22.5	152/149	L
295/80R22.5	152/149	M
315/80R22.5	154/150	M
	156/150	L



### SP 431 A

Drive Position, Regional and Short Haul

SIZE	LOAD	SPEED
11R22.5	148/145	L
12R22.5	152/148	L
315/80R22.5	154/150	M



### SP 571

All Wheel Position

SIZE	LOAD	SPEED
12R22.5	152/149	L
315/80R22.5	154/150	M
	156/150	L



### SP 261

Premium Steer

SIZE	LOAD	SPEED
385/65R22.5	160/158	K/L



### SP 231 A

Premium Trailer

SIZE	LOAD	SPEED
385/65R22.5	160	K
425/65R22.5	165	K



### SP 171

All Wheel Position

SIZE	LOAD	SPEED
11R22.5	146/143	L



### SP 160

All Wheel Position, Regional Haul

SIZE	LOAD	SPEED
10.00R15	145/148	F
7.50R16	122/120	L
8.25R16	128/126	L
8.25R20	136/134	L
9.00R20	140/137	L
10.00R20	146/143	L
11.00R20	150/146	L
9R22.5	136/134	L
10R22.5	144/142	L
11R22.5	148/145	L
275/70R22.5	148/145	L



### SP 931

All Wheel Position

SIZE	LOAD	SPEED
12R22.5	152/148	J



### SP 120

All Wheel Position, Regional Haul

SIZE	LOAD	SPEED
265/70R19.5	143/141	J



### SP 502

All Wheel Position

SIZE	LOAD	SPEED
265/70R19.5	143/141	J



### SP 341

All Wheel Position

SIZE	LOAD	SPEED
235/75R17.5	132/130	M



### SP 430

All Wheel Position, Regional Haul

SIZE	LOAD	SPEED
225/90R17.5	128/126	L



### SP 225

All Wheel Position

SIZE	LOAD	SPEED
12.00R24	156/153	K



### SP 163

Trailer

SIZE	LOAD	SPEED
8.25R15	143/141	J



### SP 811

All Wheel Position

SIZE	LOAD	SPEED
9.00R20	141/139	K



### STE

All Wheel Position

SIZE	LOAD	SPEED
11.00R20	150/147	K





# Discover next generation TBR performance with **DECTES Technology**

**DECTES**  
DUNLOP Energy Control Technologies



**It's technology upon which you can depend. It's technology that adds Cost Per Kilometre savings that can be applied straight to the bottom line of any fleet. It's technology that has been tested, and proven worldwide.**

Forget everything you ever thought of commercial tyre capabilities. The new Dunlop Truck and Bus Range features unique DECTES (Dunlop Energy Control Technologies) in selected patterns – a combination of innovative design and compounding technologies that reduce friction and heat energy loss in the dynamic state of the tyre, helping to reduce rolling resistance by up to 30%.

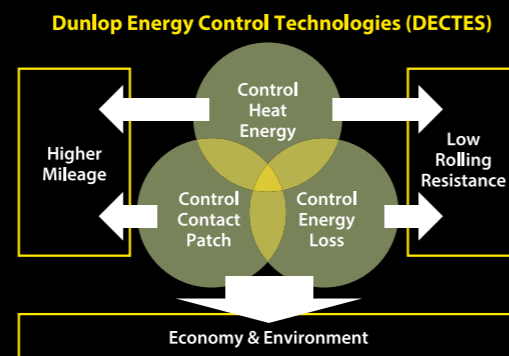
**The result?**

- Improved fuel consumption
- Excellent performance in terms of abrasion resistance
- Improved contact patch provides a slow, even wear rate that prolongs tyre life, reduces the frequency of tyre maintenance and rotation and enhances retreadability.

**There are three key components that make DECTES so effective:**

1. **Square Contact Technology** – with a more uniform and rigid contact patch on the road, the shoulder area is less exposed to undue pressure to reduce the possibility of uneven wear, which also reduces the amount of maintenance and rotation required. The contact patch is also more consistent despite changes in the load, allowing for a more even wear in all environments.

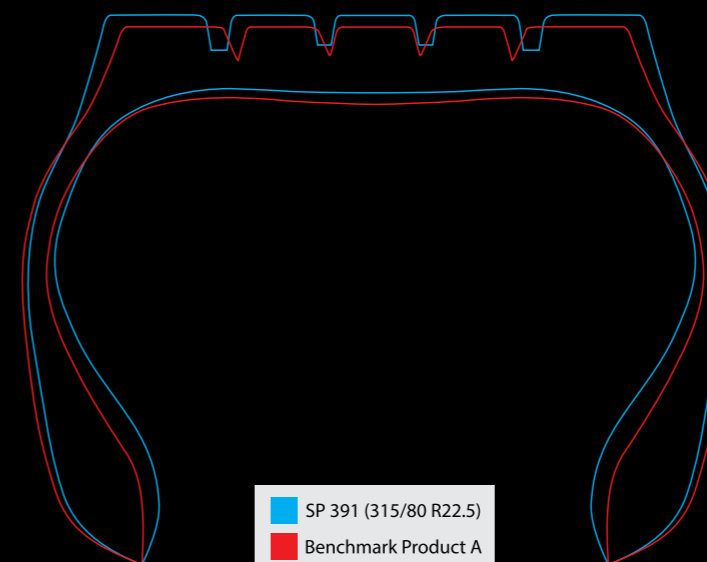
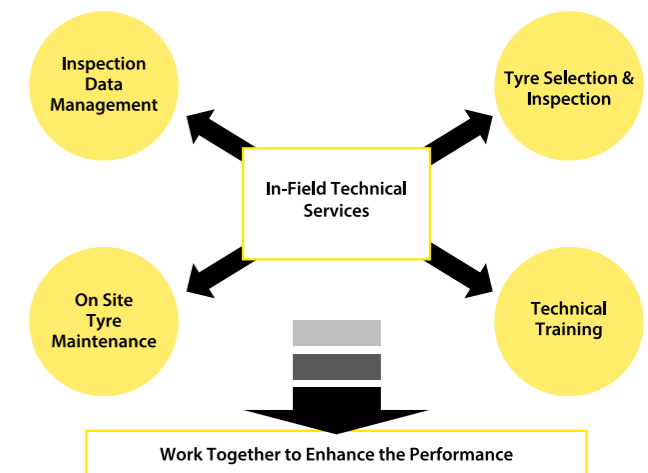
2. **S.A. Microparticle Carbon** – this unique carbon has enhanced binding properties to the polymer allowing for less heat energy build-up and enhancing mileage and wear resistance. This also contributes to a low rolling resistance reducing fuel consumption.
3. **ECORUT Compound and ECORUT Profile** – with the inclusion of the specific carbon and bio-chemical fillers in the tread compound, there is a reduction in energy loss which increases the resistance to wear and reduces the rolling resistance. Together with less curvature in the profile the energy loss is reduced further increasing the benefit of fuel efficiency.



## In-Field Technical Services

### The SRSA In-Field Technical Services team is our support to assist fleets throughout South Africa.

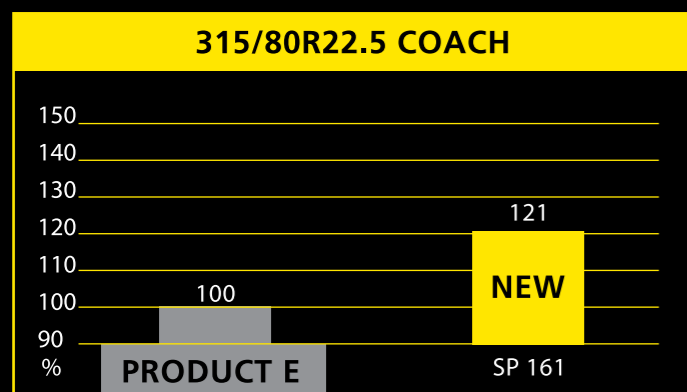
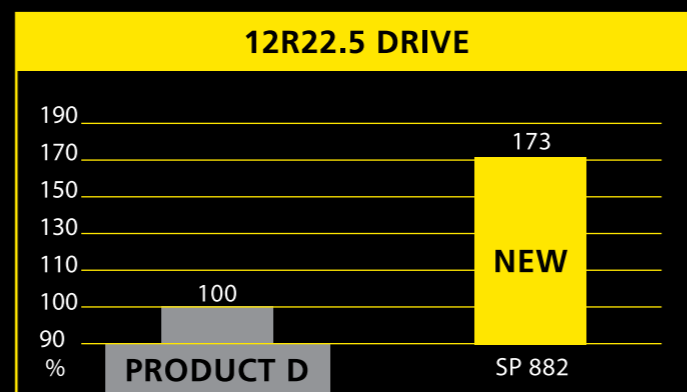
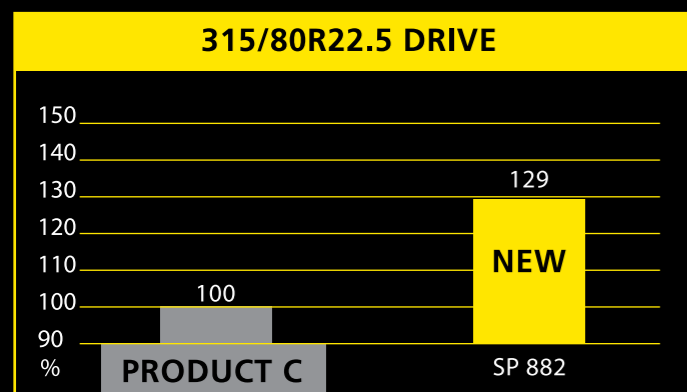
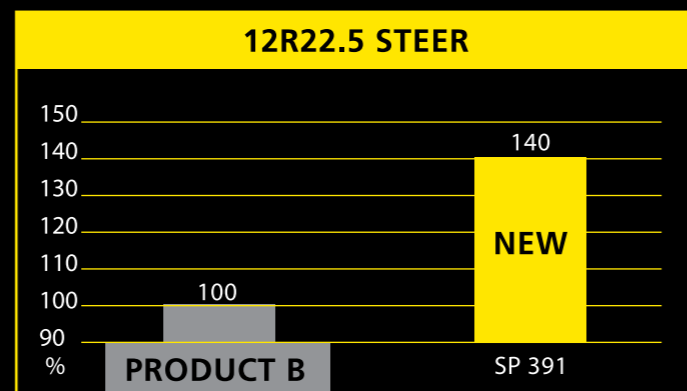
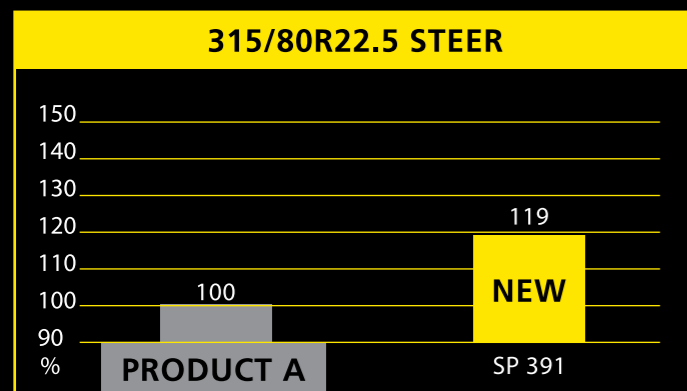
This specialised team supports our end-users with appropriate product selection and sound technical information on tyre and vehicle maintenance to ensure you get the best value for your money. They also handle tyre evaluations in conjunction with our Technical Department to ensure speedy resolutions and ongoing product development.



## Profile Comparison

The wider, squared off profile provides a more rigid contact patch to reduce shoulder pressure and encourage slower, even wear and a reduction in maintenance and rotation. The reduced curvature also assists in cutting energy loss in the tyre for enhanced fuel efficiency.





**We tested 3 of our new generation TBR patterns against established benchmarked products in in-field testing. The testing is ongoing but preliminary results show the new generation Dunlop range to deliver consistently superior projected mileage in various applications.**



SP 391



SP 161



SP 882



SP 882

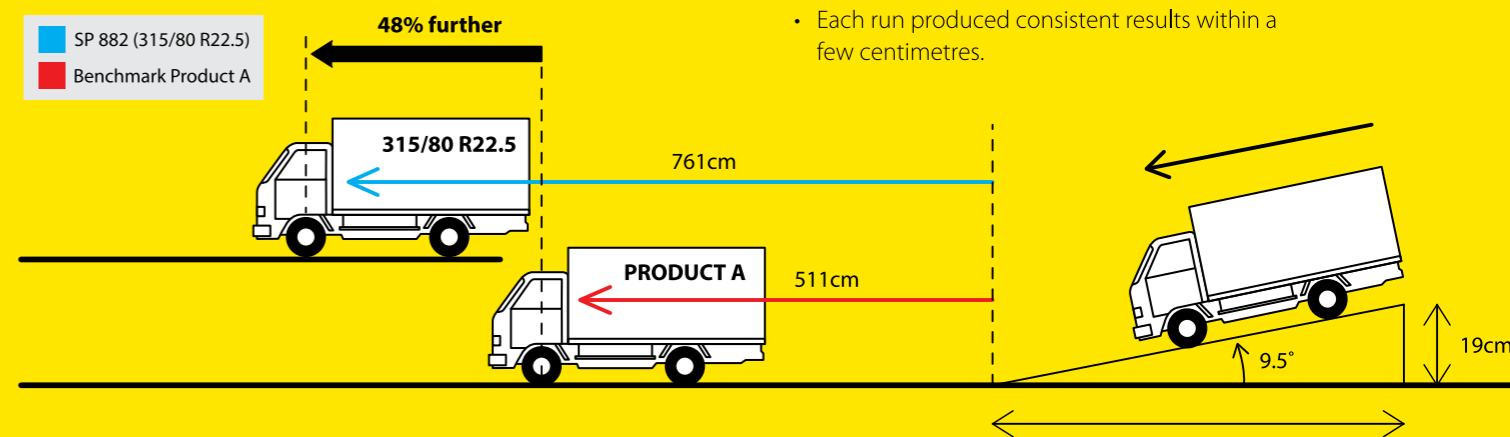
## Testing the extra low rolling resistance of the new TBR range

### Equipment used:

- MAN LE 18.220 tipper 4x2 six-wheeler truck
- Two steel ramps
- 4 x 315/80 R22.5 SP 882 tyres on rims
- 4 x 315/80 R22.5 benchmark tyres on rims

### Method:

- Remove inner drive tyres off the truck
- Tyres were inflated to 800kpa
- Steel ramps were positioned behind the truck on a flat surface
- Truck was backed up onto the ramps, then the brake was released
- Truck was allowed to free-roll down the ramp, onto the flat surface
- Each run was marked central to truck steer tyre
- Each set of tyres were tested six times, and the average of the runs was recorded
- Each run produced consistent results within a few centimetres.



 **SUMITOMO RUBBER SOUTH AFRICA (PTY) LTD.**

Sumitomo Rubber South Africa (Pty) Ltd.  
The Old Factory Building, Lion Match Office Park, 892 Umgeni Road  
Durban, 4001, Kwazulu Natal, South Africa  
P O Box 925, Durban, KwaZulu-Natal, South Africa, 4000  
Tel: +27 31 242 1111  
Fax: +27 31 242 1366  
Email: [marketing@srigroup.co.za](mailto:marketing@srigroup.co.za)